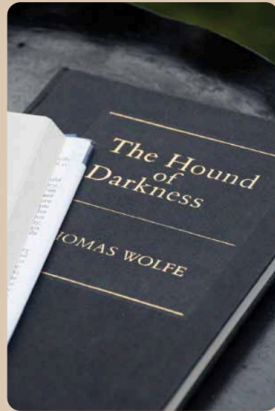
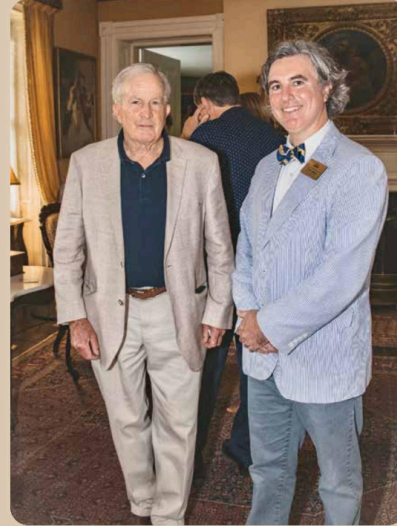




The house floated up suddenly through the twilight of the rain. It was all there--stocky central box fronted by tall pillars..." from "Her Last Case," November 1934 by F. Scott Fitzgerald.



A collection of Thomas Wolfe stories.



Turney McKnight chats with Director of Education Travis Shaw of the Virginia Piedmont Heritage Area who presented the background and history of the "As Ever" program. "The furnishings of the room represent almost every style and period of the past century and a half."- from "The House at Malbourne" by Thomas Wolfe.

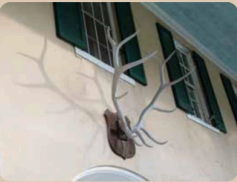


George Morison is a member of the family that can trace their roots.

AS EVER YOURS: The Lost Generation

Photos by Tiffany of Dillonkeenphotography

Maxwell Perkins, the esteemed Charles Scribner's Sons book editor in New York, was very familiar with Welbourne, a country estate near Middleburg. He met Elizabeth Lemmon in 1922; she was the great-great granddaughter of John Peyton Dulany, who purchased it in 1833.



A lifetime of artifacts.

Perkins was smitten with Lemmon's southern splendor and maintained a long-distance (often steamy, yet platonic) letter relationship with her until his death in 1947. A portion of those letters has been published in the book *As Ever Yours*.

Perkins urged writer Thomas Wolfe to visit the bucolic countryside in the early 1930s. His work in "Hound of Darkness" includes a story called "The House at Malbourne." Following a visit to Welbourne, Wolfe described the fictional house as: "not unlike the one at Mount Vernon, save that it is situated in a hollow rather than on a hill and, lacking somewhat the delicate austerity and precise design of its more famous neighbor, it yet surpasses it in warmth and naturalness."

F. Scott Fitzgerald also set "Her Last Case," his 1934 short story (first published in the Saturday Evening Post), in the Virginia countryside. The Virginia Piedmont Heritage Association recently put together a fascinating program that focused on this captivating bygone era.



Dulany Morison, a seventh-generation member of Welbourne's founding family, is a man in full.



From Thomas Wolfe: "It is a tragic house."



Adult beverages were served.



A guest at the reception was perhaps channeling F. Scott Fitzgerald's main female character: "Beyond that she felt suddenly strange and foreign and frightened; it was the arriving at a new lonely place with a storm in the air."

